



# Rab 35 Polyclonal Antibody

<b>Catalog No</b>	YP-Ab-16199
<b>Isotype</b>	IgG
<b>Reactivity</b>	Human;Mouse;Rat
<b>Applications</b>	WB; ELISA;IHC
<b>Gene Name</b>	RAB35
<b>Protein Name</b>	Ras-related protein Rab-35
<b>Immunogen</b>	The antiserum was produced against synthesized peptide derived from human RAB35. AA range:99-148
<b>Specificity</b>	Rab 35 Polyclonal Antibody detects endogenous levels of Rab 35 protein.
<b>Formulation</b>	Liquid in PBS containing 50% glycerol, 0.5% BSA and 0.02% sodium azide.
<b>Source</b>	Polyclonal, Rabbit,IgG
<b>Purification</b>	The antibody was affinity-purified from rabbit antiserum by affinity-chromatography using epitope-specific immunogen.
<b>Dilution</b>	WB 1:500-2000;IHC-p 1:50-300; ELISA 2000-20000
<b>Concentration</b>	1 mg/ml
<b>Purity</b>	≥90%
<b>Storage Stability</b>	-20°C/1 year
<b>Synonyms</b>	RAB35; RAB1C; RAY; Ras-related protein Rab-35; GTP-binding protein RAY; Ras-related protein Rab-1C
<b>Observed Band</b>	24kD
<b>Cell Pathway</b>	Cell membrane ; Lipid-anchor ; Cytoplasmic side . Membrane, clathrin-coated pit . Cytoplasmic vesicle, clathrin-coated vesicle . Endosome . Melanosome . Present on sorting endosomes and recycling endosome tubules (PubMed:16950109). Tends to be enriched in PIP2-positive cell membrane domains (PubMed:16950109). During mitosis, associated with the plasma membrane and present at the ingressing furrow during early cytokinesis as well as at the intercellular bridge later during cytokinesis (PubMed:16950109). Identified in stage I to stage IV melanosomes (PubMed:17081065). .
<b>Tissue Specificity</b>	Brain,Muscle,Uterus,
<b>Function</b>	function:Possesses GTPase activity.,similarity:Belongs to the small GTPase superfamily. Rab family.,subcellular location:Identified by mass spectrometry in melanosome fractions from stage I to stage IV.,
<b>Background</b>	function:Possesses GTPase activity.,similarity:Belongs to the small GTPase superfamily. Rab family.,subcellular location:Identified by mass spectrometry in melanosome fractions from stage I to stage IV.,



### matters needing attention

Avoid repeated freezing and thawing!

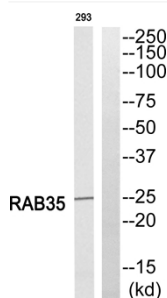
### Usage suggestions

This product can be used in immunological reaction related experiments. For more information, please consult technical personnel.

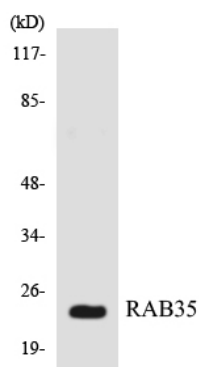
## Products Images



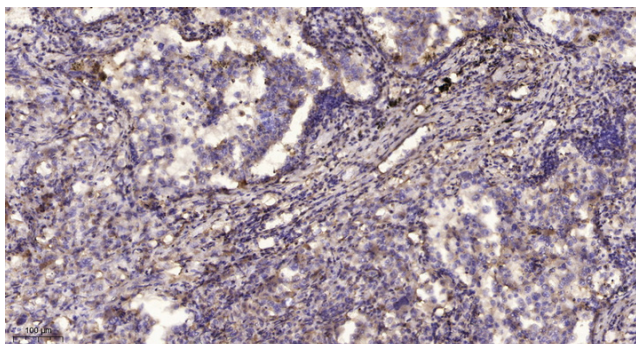
Western Blot analysis of various cells using Rab 35 Polyclonal Antibody



Western blot analysis of RAB35 Antibody. The lane on the right is blocked with the RAB35 peptide.



Western blot analysis of the lysates from HT-29 cells using RAB35 antibody.



Immunohistochemical analysis of paraffin-embedded human lung cancer. 1, Antibody was diluted at 1:200(4° overnight). 2, Tris-EDTA, pH9.0 was used for antigen retrieval. 3, Secondary antibody was diluted at 1:200(room temperature, 45min).